

DATA SHEET

MapInfo Crime Profiler

REAL-TIME ANALYSIS OF CRIME DATA, ENHANCING VISUALISATION
AND IMPROVING EFFICIENCIES



OVERVIEW

Summary

MapInfo Crime Profiler enables you to quickly analyse crime data and improve your efficiency. Key capabilities such as hotspot analysis, interactive analytical investigation and temporal analysis are key features of this solution.

Benefits

- Dedicated solution for Crime Analysts
- Generate hotspots interactively to get better insight into volume crime patterns.
- Perform geographic and temporal analysis.
- Interactively investigate the detail behind your analysis using the interactive analytical tools.
- Summary statistics calculated in real-time.

MapInfo Crime Profiler is Pitney Bowes Business Insight's dedicated solution for Crime Analysts. It provides a single package of capabilities for applying common operations and a toolkit to enable investigative or research-based analysis. Along with core functions such as hotspot analysis, it includes highly visual and interactive charting and graphing capabilities including sophisticated time-based analysis. Crime analysis is a law enforcement function that involves systematic analysis for identifying and analysing patterns and trends in crime and disorder. MapInfo Crime Profiler enables information on patterns to be analysed which can help law enforcement agencies deploy resources in a more effective manner, and assist detectives in identifying and apprehending suspects. MapInfo Crime Profiler also plays a role in the identification of crime problems, monitoring and evaluating operations and formulating crime prevention strategies. The offering is a new module for Pitney Bowes Business Insight's, MapInfo Professional®. MapInfo Crime Profiler seamlessly integrates itself within MapInfo Professional and provides the user with a range of useful crime analysis tools. It enables interactive analysis, allowing the user to conduct complex crime analysis from within MapInfo Professional. This direct connection allows faster visualisation with added simplicity through its dynamic functionality.

MapInfo Crime Profiler Capabilities

- Easy to use and interactive hotspot map creation (instantly see how different settings change the representation of the data).
- Maps, charts and graphs, including specific charts for time-based analysis. These different views of your data are linked, allowing you to perform real-time "what if" analysis on your data.
- Capabilities you need to select and work with subsets of specific crime data, by series, type, time, locale or other characteristics.
- Proximity analysis (distance or journey based analysis) of crimes to known offenders or risk factors and other spatial analysis capabilities.
- Mapping functionality that allows you to work with map data in a wide variety of formats and types. This includes aerial photography, street maps, demographics, segmentation maps and more. If you have data coming through from partnerships or other external sources, MapInfo Crime Profiler is likely to be able to make use of it.
- The ability to define force boundaries such as beats and patrol areas. This can be done in a number of ways and can incorporate crime data, statistical data or other factors in the process.
- Ability to provide maps, charts, graphs and reports as a printout or in a variety of other formats for sharing with all levels of the organisation.

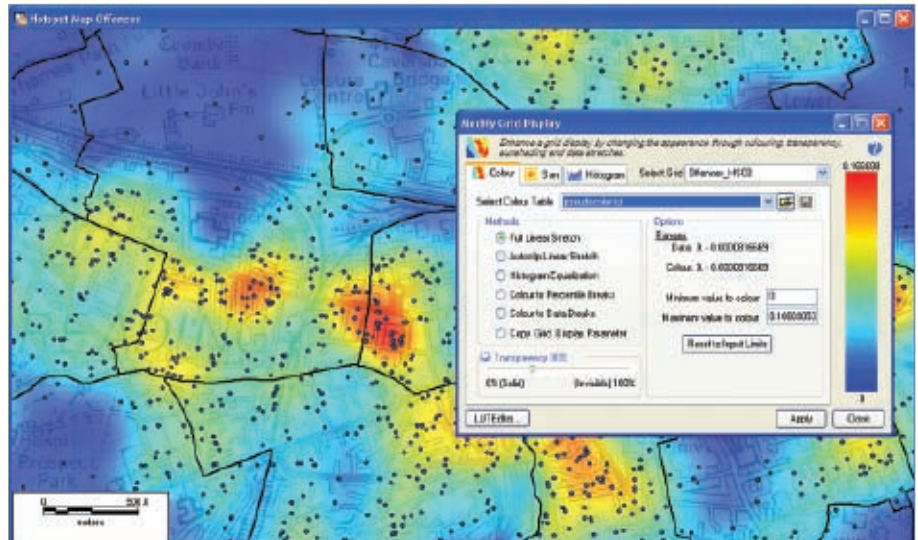


Figure 1: Identifying crime hotspots is an important step in strategic resource and activity planning. It can be used to determine changing trends and identify areas of specific concern. MapInfo Crime Profiler includes a fully interactive hotspot and volume data analysis tool. When creating a hotspot map, an interactive preview of the result is presented. This helps analysts to learn and use the system more quickly and save time overall in producing hotspot maps. This screen illustrates the full interactive configuration of the hotspot process.

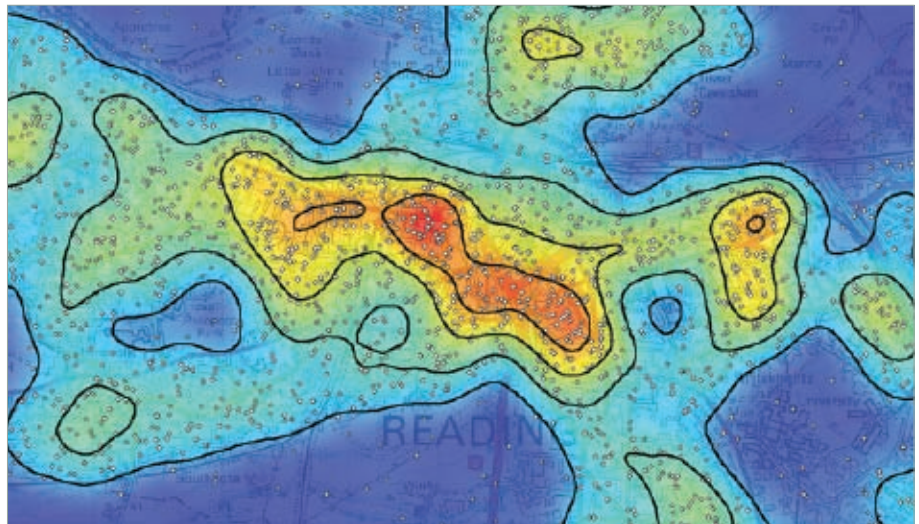


Figure 2: The question "what settings should I use" is answered by the interactive preview that enables the analyst to see how various settings impact the resulting hotspot map, before it is generated. Once the process has been refined it can be saved as a scenario for re-use or sharing with colleagues. A range of algorithms is available for crime, demographic and geographic analysis. The results can then be applied to any map to provide an immediate view of the clustering of crime incidents, offender locations, resources or other factors. This screen shows a hotspot examining the density of all incidents.

“WITH MAPINFO CRIME PROFILER WE CAN MAP CRIME TYPES AND LOCATIONS, ESTABLISH TRENDS AND USE THE INFORMATION TO DEPLOY RESOURCES MORE EFFECTIVELY. MAPINFO CRIME PROFILER IS DEFINITELY HELPING US TO BUILD A SAFER COMMUNITY.”

Clare Usherwood, Partnership Analyst, Safer Derbyshire Research and Information Team

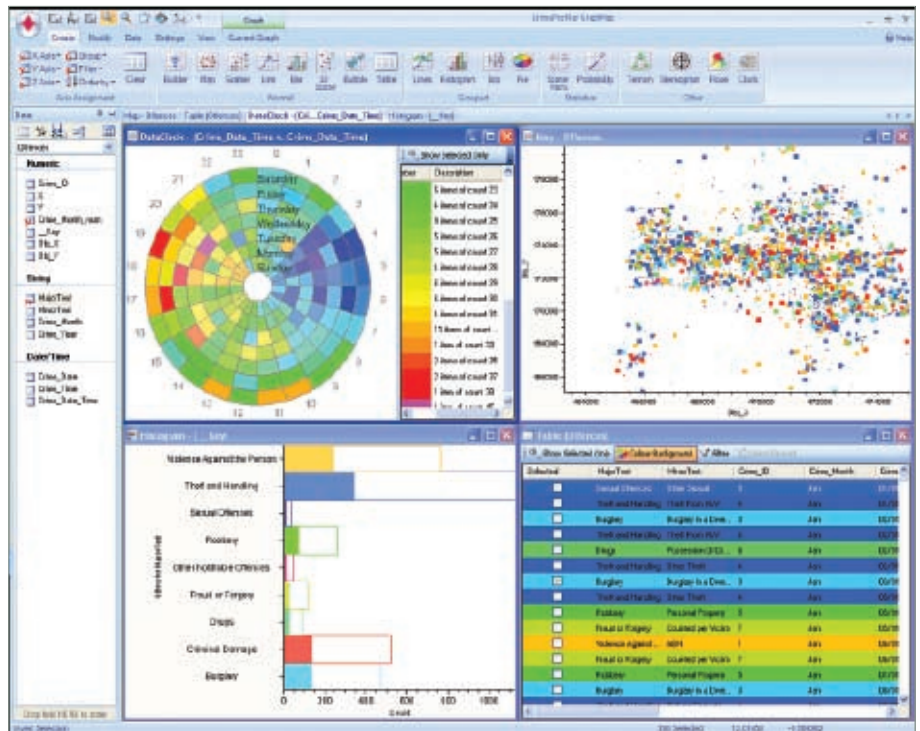


Figure 3: MapInfo Crime Profiler helps address the “what if” question by providing a real-time interactive analytics environment. This environment is seamlessly linked to the map so the effect of spatial queries and relationships can be seen in an analytical context. The screen (above) shows incidents by time, category, day of week and geographical area. The map, graph and time series charts are all linked together allowing the crime analysts to select data in any one view and see this reflected in the other views. This is extremely powerful for finding trends and patterns.

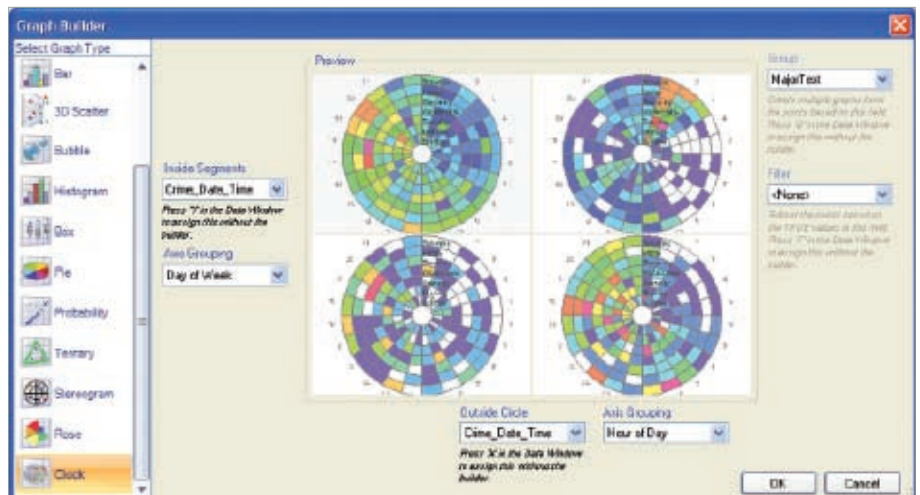


Figure 4: The analytics capability includes the automatic calculation of summary statistics based on your data selections, providing an intuitive investigation tool. Once you have analysed the statistics, the results can then be viewed on the map, maintaining the two-way link between the map and the analytics. This screen shows the summary statistics of a selection of incidents within multiple wards.

MapInfo Crime Profiler

Conclusion

MapInfo Crime Profiler, in addition to creating hotspot maps, enables many different layers of data (e.g. incidents, offenders, population, schools, deprivation, housing, train stations, etc) to be analysed geographically and through interactive charts and graphs. Crime pattern analysis, with other local data, can help to understand the distribution of crime and to explore the mechanisms, dynamics and generators of criminal activity with the goal of designing programmes of action to reduce crime and the fear of crime.

The analysis of persistent crime problems has been used by many law enforcement agencies to help identify, target and prioritise suitable areas for crime prevention initiatives. These extend to identifying crime hotspots and allocating and deploying effective crime reduction responses to them. MapInfo Crime Profiler significantly improves the ability of crime analysts and researchers to understand crime patterns and to report and share this information with management and others in the organisation. The ultimate result is improved decision making and ultimately safer communities.

FOR MORE INFORMATION, PLEASE VISIT OUR WEB SITE AT
[HTTP://WWW.PBINSIGHT.CO.UK/CRIMEPROFILER](http://www.pbinsight.co.uk/crimeprofiler)

UNITED STATES

One Global View
Troy, NY 12180

1.800.327.8627

pbbi.sales@pb.com
www.pbinsight.com

CANADA

26 Wellington Street East
Suite 500
Toronto, ON M5E 1S2

1.800.268.3282

pbbi.canada.sales@pb.com
www.pbinsight.ca

EUROPE/UNITED KINGDOM

Minton Place
Victoria Street
Windsor, Berkshire SL4 1EG

+44.800.840.0001

pbbi.europe@pb.com
www.pbinsight.co.uk

ASIA PACIFIC/AUSTRALIA

Level 7, 1 Elizabeth Plaza
North Sydney NSW 2060

+61.2.9437.6255

pbbi.australia@pb.com
pbbi.singapore@pb.com
pbbi.china@pb.com
www.pbinsight.com.au

INDIA

Pitney Bowes Software India Pvt. Ltd.
C-28-29, 5th Floor, Tower-B,
Logix Cyber Park, Sector 62,
Noida, UP 201307, India

+91-120-402-6000

contactindia@pb.com