

DATA SHEET

# MapInfo® Professional v11.0

SAVE TIME, MONEY, AND RESOURCES WITH THE PREMIER LOCATION INTELLIGENCE SOLUTION



## Summary

MapInfo Professional v11.0 is a powerful Microsoft Windows-based mapping application that allows business analysts and GIS professionals to easily visualise the relationships between data and geography. MapInfo Professional is an industry leader in usability and it is part of a comprehensive integrated location platform. With Premium Services and out of the box connectivity to MapInfo Manager's data management capabilities, it continues to set the standard for effective spatial data creation, editing and analysis.

## Benefits

- Faster tabular data creation and analysis via the all new Browser Window
- Perform memory intensive operations through enhanced support of 64-bit operating environments
- Direct integration with MapInfo Manager, enabling efficient searching, accessing and management of spatial data throughout an organisation
- The available Premium Services includes instant access to worldwide road level tile-data "Move Map To"

## OVERVIEW

MapInfo Professional v11.0 addresses key usability and business problems related to spatial data creation, analysis, access and spatial data management. The new browser window offers advanced data entry options and follows the latest industry practices that result in a simple yet effective alphanumeric data entry experience. MapInfo Professional's direct integration with MapInfo Manager promotes effective use of an organisation's spatial data. The all new Premium Services option makes road level contextual data or navigating a map as easy as clicking a button or typing an address.

### Effective Tabular Data Creation and Analysis

MapInfo Professional v11.0 makes tabular data entry, editing, navigation and analysis a snap. The new browser window offers advanced data entry options and adopts the latest industry practices for easy and effective data entry. Easy access to rich stylistic and display options such as font, size and control over alternating row colour ensures improved data readability.

#### MapInfo Professional users can:

- Save time and improve productivity with the advanced tabular data creation tools
- Define preferred visualisation for better output presentation
- Easily manipulate and analyse data, saving time during data analysis

Working with large datasets and obtaining preferred views of the data is generally a multi step process requiring knowledge of

"SQL select" syntax. Now with MapInfo Professional users just right click on the context menu to define preferred views, greatly simplifying search, editing and interacting with all open tables. The intuitive sort dialog enables users to perform important operations with ease.

### Advanced Data Management with MapInfo Manager

MapInfo Professional v11.0 integration with MapInfo Manager simplifies data management including the ability to quickly find and open the right data based on specific use criteria. V10.5 added the ability to search and view metadata catalogues created by MapInfo Manager. V11.0 extends this integration with the ability to add map data to MapInfo Manager right from MapInfo Professional. The integration with MapInfo Manager will allow users to:

- Quickly find the needed data anywhere in the organisation
- View origin, quality and author without ever opening the data
- Add the data to your map with a click of a button
- Share data you create with others in the organisation

All this can now be achieved without ever leaving MapInfo Professional.

# MapInfo® Professional v11.0

## EUROPE/UNITED KINGDOM

Minton Place  
Victoria Street  
Windsor, Berkshire SL4 1EG  
+44.800.840.0001

pbbi.europe@pb.com  
www.pbinsight.co.uk

## ASIA PACIFIC/AUSTRALIA

Level 7, 1 Elizabeth Plaza  
North Sydney NSW 2060  
+61.2.9437.6255

pbbi.australia@pb.com  
pbbi.singapore@pb.com  
www.pbinsight.com.au

## INDIA

5th Floor, Tower B  
Logix Cyber Park  
NOIDA UP, India  
Troy, NY 12180  
+91.120.402.6000

pbbi.southasia@pb.com  
www.pbinsight.co.in

## UNITED STATES

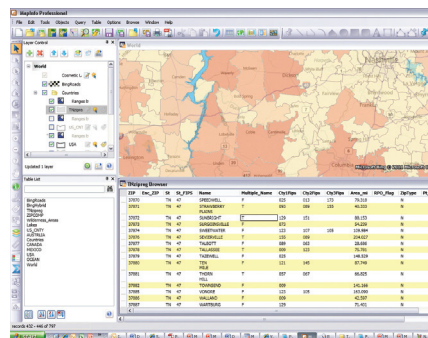
One Global View  
Troy, NY 12180  
1.800.327.8627

pbbi.sales@pb.com  
www.pbinsight.com

## CANADA

26 Wellington Street East  
Suite 500  
Toronto, ON M5E 1S2  
1.800.268.3282

pbbi.canada.sales@pb.com  
www.pbinsight.ca



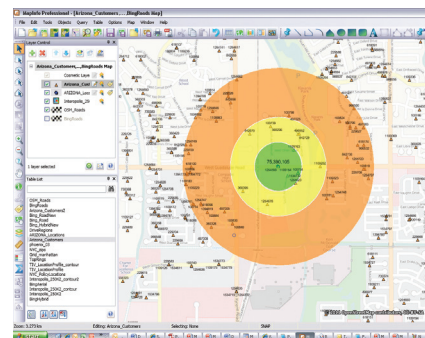
The new Browser Windows greatly improve data readability by automatically adjusting column width to content, using alternating row colors and supporting multi line text.

## Perform Memory Intensive Operations with Enhanced 64-bit Support

MapInfo Professional v11.0 now supports greater memory intensive operations through enhanced support of 64-bit Windows operating environment. MapInfo Professional v11.0 addresses this issue by automatically detecting and utilising up to twice the memory space of previous versions. Performing such operations as: object processing, Large Grid, MS Excel and Raster data loading and contouring can now work with twice the amount of data without memory limitations or programme errors.

## Premium Services Now Available

MapInfo Professional v11.0 users can now opt for additional functionality gaining access to the latest Road Tile data with a click of a button. Within Premium Services, users can access Open Street Map tiles (OSM) and Bing road tile services directly from their Mapper



MapInfo Professional Premium Services provide the convenience of adding Road Tiles to any map with a click of a button.

window. Users can easily overlay street tile data to enable rapid contextual awareness without extensive overheads in opening large amounts of data. If users need to access different places of interest quickly, the 'Move Map To' Premium Service allows users to type in a place or address and zoom directly to the desired location with a click of the mouse.

## Can You Afford Not to Be Location Intelligent?

Data is used every day, and across every enterprise, to make critical strategic decisions that positively impact both business and customers alike. MapInfo Professional v11.0, and its location intelligence capabilities, helps organisations understand their business, analyse trends geographically, and make critical decisions with greater clarity of risk and opportunity. Make smarter decisions with MapInfo Professional v11.0.

FOR MORE INFORMATION ON MAPINFO PROFESSIONAL V11.0, VISIT [WWW.PBINSIGHT.EU/UK/MIPRO](http://WWW.PBINSIGHT.EU/UK/MIPRO)

## SPECIFICATIONS

Supported Operating Systems  
Desktop: Windows XP SP3, Windows 7 Ultimate SP1  
Server: Windows 2008 Server 64 R1 & R2, Windows 2008 (64 Bit) Server with XenServer (a.k.a. Citrix)