

DATA SHEET

Pitney Bowes Spectrum™

Enterprise Location Intelligence Solution

LOCATION INTELLIGENCE MODULE

WHEN LOCATION MATTERS, TRANSFORM YOUR DATA INTO ACCURATE LOCATION INFORMATION FOR BETTER DECISIONS AND FOR PROVIDING GREAT SERVICE



Summary

Making sound business decisions often requires that you have location intelligence beyond an address. By integrating the best of data quality capabilities with rich location intelligence, Pitney Bowes Spectrum Enterprise Location Intelligence Module delivers location-based intelligence to every business process that relies on accurate location data.

Benefits

- Location-based intelligence in every business process that relies on accurate location data
- Allows more efficient and effective segmentation and targeting
- Reduces costs associated with service and delivery
- Helps to reduce risk and increase customer service
- Sophisticated analytics helps to optimise business operations
- Integrates the best of data quality with rich location intelligence

OVERVIEW

No two organisations use spatial data exactly the same. It is even rare for different departments of the same organisation to do so. The Pitney Bowes Spectrum Enterprise Location Intelligence Module provides precise information to individuals with diverse organisational responsibilities such as logistics, marketing, customer service, and network performance. This module combines the best of Spectrum data quality and location intelligence to produce sophisticated algorithms that help to streamline operations and decision making across the enterprise.

Powerful Spatial Applications

Many business decisions and daily operational tasks require the use of geospatial information. In fact 70% of all business data contains a location component. Moreover, location insight is no longer restricted to GIS. Location data is an enterprise asset and needs to be managed as such in order to enable business processes that can benefit from accurate and timely location intelligence. Spectrum Enterprise Location Intelligence Module empowers users to easily confirm geospatial locations within geospatial boundaries from a specific location and a list of targeted geospatial locations to:

- **Find Closest Site** – Using a location’s latitude and longitude coordinates as input and a spatial database of targeted location latitude and longitudes, you can determine which sites are closest.

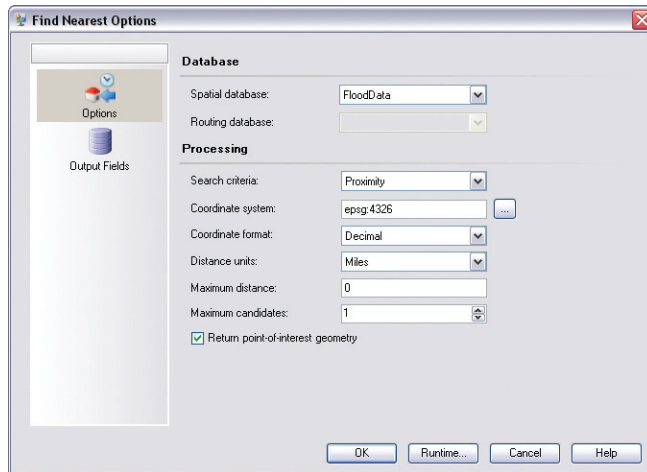
- **Find Point in Polygon** – Using a spatial boundary database (Polygon) and latitude/longitude coordinates of locations (Points), identifies the geographic inclusion or exclusion of the points within the polygon. This spatial analysis determines whether or not a given location resides in an area of interest. Further, the distance to the edge of the Polygon is reported with the option of including a “buffer” around the Polygon to identify those locations that are close to the edge.
- **Find Nearest** – Find Nearest locates the points of interest (POI) that are nearest to a given location. You can use Find Nearest to identify points that are:
 - > The closest linear distance from a point
 - > The closest travel distance from a point
 - > The shortest travel time from a point
- **Get Travel Cost Matrix** – calculates the travel time and distances between an array of start and end locations. You can use Get Travel Cost Matrix to find the shortest or fastest paths between a number of start points and a number of end points, and determine the total time and distance of the individual routes (the rout costs). Get Travel Cost Matrix may also be consumed as a web-based service.

Pitney Bowes Spectrum™

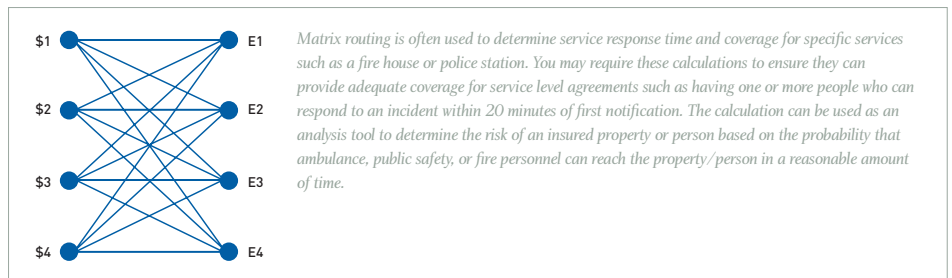
Enterprise Location Intelligence

LOCATION INTELLIGENCE MODULE

THIS MODULE COMBINES THE BEST OF SPECTRUM DATA QUALITY AND LOCATION INTELLIGENCE TO PRODUCE SOPHISTICATED ALGORITHMS THAT HELP TO STREAMLINE OPERATIONS AND DECISION MAKING ACROSS THE ENTERPRISE.

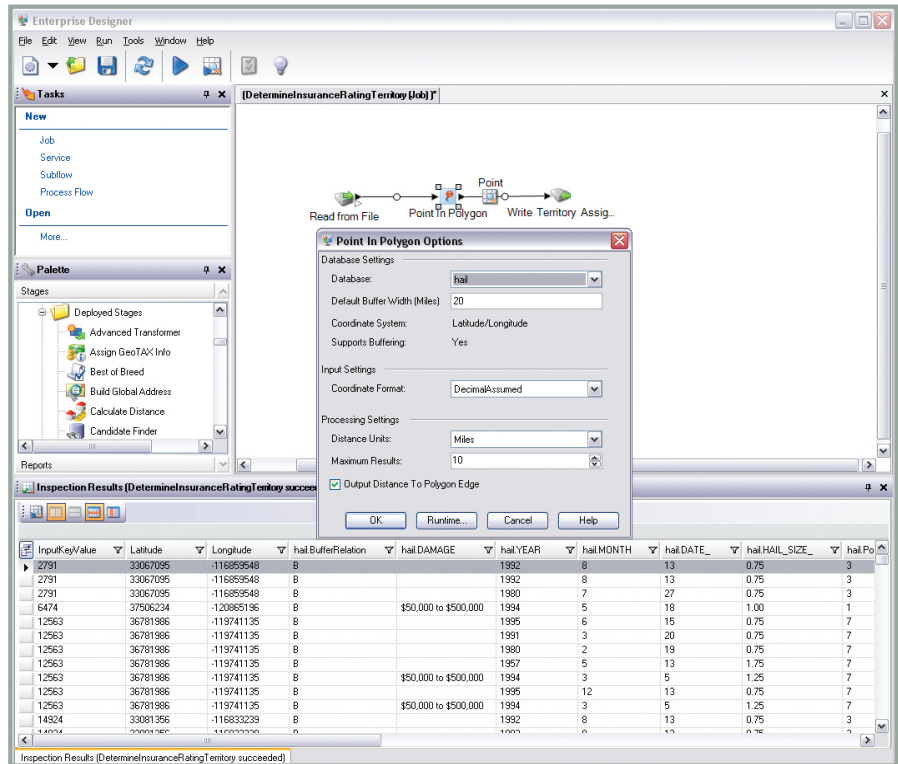


Example of Find Nearest



Example of Get Travel Cost Matrix

- Get Travel Boundary** – used with both pedestrian data and driving data, updated to include settings for ambient speed. You can create polygons corresponding to precise isochrone or isodistance calculations. In addition to the information needed for targeting and service eligibility, this application provides additional insights:
 - > Return Holes – identify areas within your geography that cannot be reached within the desired time or distance.
 - > Identify Islands – conversely, you can identify pockets that fall outside your traditional boundaries that can be reached within a desired time or distance.
 - Get Travel Directions** – you can optionally run a set of latitude/longitude points that represent a route geometry. The route geometry can be used to create a route map and to perform analysis on the route.
 - Find Travel Time** – by transforming addresses into precise latitudes and longitudes, you can automatically calculate the distance between two points in terms of time or distance.
 - Get Bounding Box** – returns data in the form of a bounding box made up of two points.
 - Is Within Boundary** – takes latitude/longitude coordinates, as well as polygon information and determines whether the point represented by the latitude and longitude is in that polygon.
- In addition, a new Spatial Calculator has been added that performs a variety of spatial validation, transformation and calculation operations on spatial data, supporting seventeen spatial operations, such as:
- Determining the area of a polygon
 - Determining if two geometries intersect



The screen above is part of a demo whereby an insurance customer was caught in a hail storm which damaged their automobile.

- Measuring the area of a given polygon
- Generating a buffer around a point, line or polygon
- Determine if a point is within a polygon
- Determine if a line is a line

Wide Range of User-Defined Spatial Data

The Spectrum Enterprise Location Intelligence Module databases provide a vast selection of key geospatial databases for a wide range of uses and industries. You choose one or as many of these data bases that contain the required information to meet your needs. You just provide the location and your location information will be enriched with database specific results.

Depending on the databases you utilise, you can find for example, if a specific property is in a flood zone, near a mud slide zone, has

experienced hail or tornado damage, near a school zone, within a given service area or where the closest airport is located. This is just a sampling of how our data can enrich your data. However, if your organisation requires additional or unique spatial data, Spectrum Enterprise Location Intelligence Solution also enables you to import other spatial databases through common formats. You also have the flexibility to process a single location in real time as a web service or run millions of locations behind your firewall in a batch format.

Benefit from an Integrated Approach

Rely on the Pitney Bowes Spectrum Enterprise Location Intelligence Solution and the Location Intelligence Module for a true view and full use of your data. And by incorporating other Spectrum Enterprise Data Quality Solution modules, your input data can be location addresses or

Pitney Bowes Spectrum™

Enterprise Location Intelligence

LOCATION INTELLIGENCE MODULE

Accessor's Parcel Numbers (APNs). With this level of source data, you can confirm that the address does exist and match against other addresses to insure it only exists once in your data.

The adage "time is money" is even more true today. Companies relying on Pitney Bowes Spectrum Location Intelligence Solution Location Intelligence Module's quick and powerful engine are assured reductions in the time it takes for business processes – transactions, queries, analysis, services – versus previous methods. Not requiring the time and complications of "custom programs" or a GIS analyst to process,

our approach to location intelligence allows those with knowledge of their data and business objectives to quickly and effectively produce the desired results. The Spectrum Enterprise Location Intelligence Module provides the functions and sophisticated analytics to help you optimise business operations – including marketing, sales, service, logistics and network optimisation – across the enterprise.

IMPROVE YOUR LOCATION INTELLIGENCE. FOR MORE INFORMATION ON SPECTRUM ENTERPRISE LOCATION INTELLIGENCE SOLUTIONS, CALL US TODAY OR VISIT OUR WEBSITES.

EUROPE/UNITED KINGDOM

Minton Place
Victoria Street
Windsor, Berkshire SL4 1EG
+44.800.840.0001
pbbi.europe@pb.com
www.pbinsight.co.uk

UNITED STATES

One Global View
Troy, NY 12180
1.800.327.8627
pbbi.sales@pb.com
www.pbinsight.com

CANADA

26 Wellington Street East
Suite 500
Toronto, ON M5E 1S2
1.800.268.3282
pbbi.canada.sales@pb.com
www.pbinsight.ca

ASIA PACIFIC / AUSTRALIA

Level 7, 1 Elizabeth Plaza
North Sydney NSW 2060
+61.2.9437.6255
pbbi.australia@pb.com
pbbi.singapore@pb.com
pbbi.china@pb.com
www.pbinsight.com.au

SPECIFICATIONS

Now with 64-bit operating system along with 64-bit runtime support. For additional information, please visit us at:

<http://www.pbinsight.com/products/data-management/data-quality-and-enrichment/enterprise-location-intelligence/spectrum-location-intelligence-module/>

