

DATA SHEET

# MapInfo® Manager v1.1

## Spatial Data Asset Management

TAKE COMMAND OF YOUR SPATIAL ASSETS – CATALOGUE, PUBLISH AND SHARE YOUR DATA



### Summary

Pitney Bowes MapInfo Manager enables organisations to build and manage a single point of truth for their spatial assets – facilitating easy discovery and optimising access for users throughout the organisation. Utilising open standards, MapInfo Manager is accessible to a wide variety of potential users. MapInfo Manager integrates with the industry leading MapInfo Professional supporting an efficient user adoption process.

### Benefits

- Provides an easily searchable, industry standard, central catalogue for spatial data
- Save costs by avoiding duplicate data collection or purchases
- Increase visibility of the characteristics and appropriate uses of your data
- Ensure organisational compliance with spatial data infrastructure standards, like ISO and OGC

### OVERVIEW

Pitney Bowes® MapInfo® Manager™ is a server based application that provides the necessary tools to build and manage a centralised library for your organisation's spatial data assets. This includes creating one or more easily searchable catalogues of spatial data as well as tools to populate a catalogue with the required information about your datasets, making that data easily deployable.

Whether you store your data in a spatial database or as native files, or a combination of both, MapInfo Manager provides easy, powerful control over all of the spatial assets.

#### Questions to consider:

- Do you have a large number of MapInfo Professional tables in use?
- Do you find users make copies of MapInfo Professional tables because they are hard to find?
- Is time wasted by users searching for the data they need?
- Are your expert users spending too much time helping colleagues find the data they need?
- Have data sets been used inappropriately because they were not well defined?
- Have data collection or cleanup efforts been overlapped or duplicated?
- Are one or more personnel policing data stores, network volumes and/or directory structures?
- Have useful data sets been discovered that had remained hidden due to lack of visibility within the organisation?
- Has duplicate data been purchased by different departments within your organisation?

### Metadata – The Key to Realising Data Potential

The core benefit of MapInfo Manager is its catalogue of your organisation's enterprise spatial data. This catalogue consists of metadata which is the information describing your data. Metadata can include information such as the vintage, source, owner, origin, location, geographic area and more. It essentially establishes a data set's purpose for anyone who discovers the data. A catalogue of metadata assists users in finding and accessing the data they require as well as understand the suitability of a data set for a specific purpose. If there are questions about the data, then the "owner" or custodian of the data can also become known through the metadata.

The metadata catalogues created in MapInfo Manager are built using the Open Geospatial Consortium (OGC) Catalogue Services Web (CSW) standard and therefore can be searched by MapInfo Professional users (working with the Catalogue Browser capability introduced in MapInfo Professional v10.5) along with other OGC compliant CSW service applications.

#### Creating and Editing Metadata

With MapInfo Manager, building a library of metadata is very easy. Some of the metadata can be obtained in an automated manner and done in a bulk collection effort, referred to as harvesting. Harvesting is useful for those metadata items that can be determined in an automated fashion.

# MapInfo® Manager v1.1

## Spatial Data Asset Management

Certain metadata fields may be common to some or all of your datasets (such as the owner). Repeated values can be applied automatically through the use of templates. In addition, edits and modifications to metadata can be done to individual records or to multiple records at once.

### Share – Simplify – Control

MapInfo Manager enables data custodians, GIS managers and IT administrators to control how data is published, how it can be discovered and how it can be accessed by a targeted user base.

Multiple catalogues can be created and shared. Having multiple catalogues can aid in publishing specific data sets to various audiences. Perhaps an organisation wants to publish a metadata catalogue for external consumption and another for internal consumption. For example, A local municipality wants to publish a metadata catalogue of parcel data to the public. The public in this instance needs to know only the parcel size, geographic boundaries and assessment value. The municipality may have a different, more detailed data set for internal, government employees to use. This would result in two catalogues created, referencing two very different data sets.

MapInfo Manager also enables data to be published as an image via a Web Map Service (WMS).

### Standards Compliant

MapInfo Manager adheres to various standards to maximise system and agency interoperability including ISO 19115 for metadata statements, OGC for catalogue and data publishing, and many others. For those organisations directly or indirectly impacted by the European Union INSPIRE directive, MapInfo Manager utilises the necessary standards to meet your INSPIRE requirements. For those in the UK, the Gemini v2.1 standard is also supported.

### MapInfo Manager Benefits

- “Single point of truth” reference library for your spatial data.
- Location Intelligence and GIS users can quickly and easily find and access the data they need, saving time and resources.
- Communicate the intent and purpose of the data to avoid mis-use or mis-interpretation.
- Saves on costs and effort by avoiding data duplication and prevents duplicate data purchases.
- Integrates with any OGC CSW compliant application and directly integrates with MapInfo Professional.
- Publish data via OGC WMS to protect the data from unwanted edits.

FIND OUT MORE ABOUT MAPINFO MANAGER BY VISITING OUR WEBSITES OR CALLING US TODAY.

NOTE: Europe, Middle East, India and Africa can link directly to our (English) MapInfo Manager web page at [www.pbinsight.eu/mapinfomanager](http://www.pbinsight.eu/mapinfomanager)

#### EUROPE/UNITED KINGDOM

Minton Place  
Victoria Street  
Windsor, Berkshire SL4 1EG  
+44.800.840.0001

[pbbi.europe@pb.com](mailto:pbbi.europe@pb.com)  
[www.pbinsight.co.uk](http://www.pbinsight.co.uk)

#### ASIA PACIFIC/AUSTRALIA

Level 7, 1 Elizabeth Plaza  
North Sydney NSW 2060  
+61.2.9437.6255

[pbbi.australia@pb.com](mailto:pbbi.australia@pb.com)  
[pbbi.singapore@pb.com](mailto:pbbi.singapore@pb.com)  
[pbbi.china@pb.com](mailto:pbbi.china@pb.com)  
[www.pbinsight.com.au](http://www.pbinsight.com.au)

#### INDIA

5th Floor, Tower B  
Logix Cyber Park  
NOIDA UP, India  
Troy, NY 12180  
+91.120.402.6000

[pbbi.southasia@pb.com](mailto:pbbi.southasia@pb.com)  
[www.pbinsight.co.in](http://www.pbinsight.co.in)

#### UNITED STATES

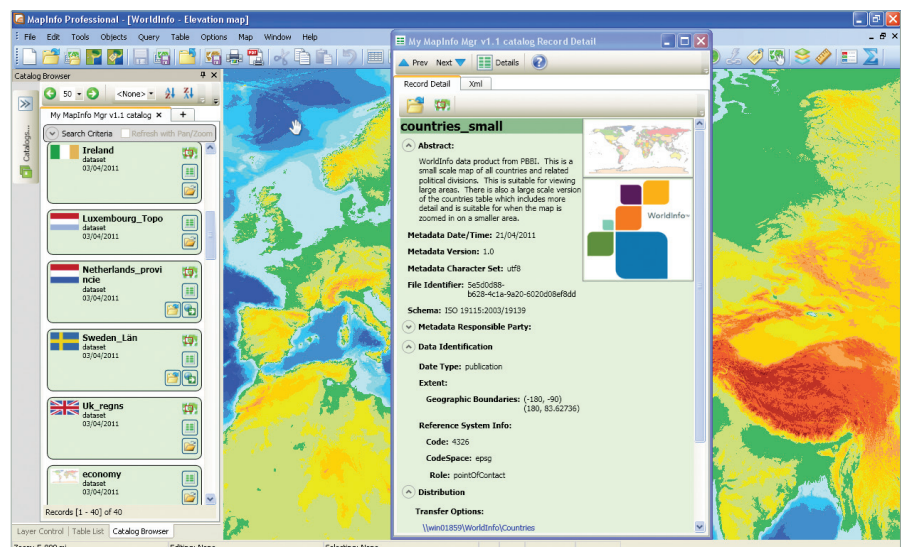
One Global View  
Troy, NY 12180  
1.800.327.8627

[pbbi.sales@pb.com](mailto:pbbi.sales@pb.com)  
[www.pbinsight.com](http://www.pbinsight.com)

#### CANADA

26 Wellington Street East  
Suite 500  
Toronto, ON M5E 1S2  
1.800.268.3282

[pbbi.canada.sales@pb.com](mailto:pbbi.canada.sales@pb.com)  
[www.pbinsight.ca](http://www.pbinsight.ca)



MapInfo Manager creates a single point of truth for your MapInfo spatial assets – accessible from MapInfo Professional or any other standards compliant application (OGC CSW).

Every connection is a new opportunity™