

## VERSION COMPARISON

# MapInfo® Professional v11.0

SAVE TIME, MONEY AND RESOURCES WITH THE PREMIER LOCATION INTELLIGENCE SOLUTION



## Summary

MapInfo Professional v11.0 is a powerful Microsoft Windows-based mapping application that allows business analysts and GIS professionals to easily visualise the relationships between data and geography. MapInfo Professional is an industry leader in usability and is part of the MapInfo Location Intelligence Suite. With Premium Services and out-of-the-box connectivity to MapInfo Manager's data management capabilities, it continues to set the standard for effective spatial data creation, editing, visualisation and analysis.

## HOW DOES v11.0 COMPARE TO PREVIOUS VERSIONS?

### Re-designed Browser Window

- Vastly superior productivity in many common operations.
- Easily sort up to four columns for a table or query
- Column width automatically set to content length (better visibility, less work to adjust column widths)
- Multi line support (for Browser and Labels)
- Easily set font and style options for any browser window
- Better selection visibility
- Multi record select via click and drag
- Easy data/cell navigation and editing options
- Ability to perform Undo/Redo operation multiple times at cell level
- Improved results when printing or creating other output

### Enhanced support of 64-bit Operating Systems:

- **Perform Memory Intensive Operations:** MapInfo Professional v11.0 will automatically detect and use up to 4GB of memory. Operations such as large object processing tasks, grid, Excel and raster data loading can now work with twice the amount of data without memory limitations.

### Updated Preferences Dialog

- More intuitive grouping of options for better navigation
- New Browser Preferences dialog
- New alternate row colour setting

### Open MWS map data in MapInfo Professional

- Share workspaces with MapInfo web based solutions and MapXtreme® applications.
- Support for multiple map windows, styles, thematic layers and legends

### New MapCAD Tools

- Scale objects
  - *Scales geographic objects by a specified factor*
- Orthogonal Points
  - *Position points orthogonal to a reference line*
- Measurement Line
  - *Generates measurement lines with cumulated distance and distance to objects*

### Integration and Data Management with MapInfo Manager

- Search, browse and open data from MapInfo Manager™. Create new metadata records directly from MapInfo Professional.
- Fast and convenient access to table metadata from Layer Control and the Table List window
- Ability to add tables to MapInfo Manager Library

## MapInfo Professional v11.0

## Microsoft Bing Premium Services\*

- **Bing™ Road Tile:** option for access to the Bing maps road tile data
- **Move Map to:** option to centre a map around a place name (gazetteer) or an address
- **OSM Road Tile:** option to access the Open Street Maps Road tile layer

## Data Base Connectivity

- **ODBC Drivers:**
  - Microsoft SQL Server 2005
  - Microsoft SQL Server 2008 Native Client
  - Oracle ODBC Driver 11.2
  - PostgreSQL ANSI ODBC driver 8.x
- **Oracle OCI Client:**
  - Oracle Instant Client version 11.2.0.1.0

## Database Servers:

## Spatial:

- SQL Server 2005 with SpatialWare 4.9
- SQL Server 2008
- Oracle Spatial 11Gr2, 10Gr2.
- PostgreSQL 8.3 with PostGIS v1.3
- PostGIS v9.0 with PostGIS v1.5.2

## XY:

- Microsoft Access 2007, 2010
- Microsoft SQL Server 2005
- Microsoft SQL Server 2008 XY on a spatialised DB
- Oracle Spatial 10Gr2, 11Gr2

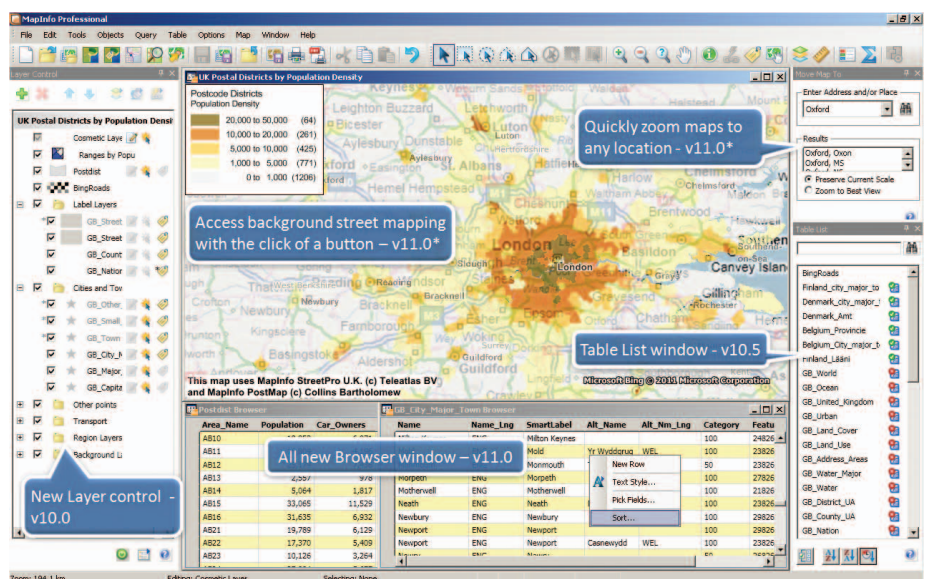
## Operating Systems

## • Desktop:

- Windows XP SP3 (Required) - for .NET 4.0
- Windows 7 Ultimate SP1
- Windows 7 Ultimate 64-bit SP1 with 32-bit compatibility mode

## • Server:

- Windows 2008 Server 64-bit SP2
- Windows 2008 R2 64-bit SP1
- Windows 2008 (64-bit) Server SP2 with XenServer (a.k.a. Citrix)



Some of the improvements made in MapInfo Professional versions 10, 10.5 and 11.

\*Premium services available at additional cost.

## MAPINFO PROFESSIONAL v10.5 ADDED:

### FIND THE DATA YOU NEED – METADATA CATALOGUE BROWSER

- Search OGC compliant CSW catalogues within your organisation or from around the world
- Access the PBBI Worldwide Data Catalogue
- Refine search using existing Map window
- Launch multiple searches against multiple servers
- Add tables to your map directly from catalogue entries (where allowed by the catalogue). Formats supported-TAB files; Zip Files (containing supported formats); WMS; WFS; Tile Servers and SHP files.

### DATA ACCESS

- Open Google KML & KMZ
- Tile Server data services
- Microsoft® Bing™ Maps (aerial and hybrid layers)

### IMPROVED EASE OF USE

- Enhanced Toolbars and cursors - improves ease of use and ease of learning
- Toolbar locations from 3rd party applications are remembered from session to session
- One click PDF output
- New toolbar icons for quickly adding Microsoft's Bing Aerial and Bing Hybrid imagery to your maps
- Dockable Table List window for easy access to apply commonly used capabilities on any table
- Dockable Named views window
- Dockable Metadata Browser
- Visual Docking guides for easy docking options
- MapBasic developers - support for docking your application windows
- Table List Window - view all open tables (whether mappable or not)
- Use dynamic search bar to quickly find the tables you need.
- Drag and drop tables into maps to quickly add data to existing maps
- Drag tables to an empty spot to create new maps
- Right click on tables to: Select all, Export, View/Update Table Structure, Create Points, or Update a table's column value
- Select one or more tables to: Add to an existing map, create a new map, browse or close the tables at once

- Layer Control improvements:
- Right click to Browse table
- Right click to Add style override
- Right click to Add label override
- Drag one or more style or label override from one layer to another
- Drag style override from one map to another
- Enhanced Sync Windows Utility - toolbar icon added for one click synchronisation

### BETTER LOOKING MAPS

- Built-in worldwide Aerial and Hybrid imagery
- Stacked style support (create new map object styles on the fly)
- Multi-zoom style and label support for easier map creation and less cluttered layer control

### OUTPUT – SHARING YOUR MAPS

- Support for standard PDF
- Support for layered PDF
- Support for Geo-registered PDF
- Support for PDF with attributes
- Support for publishing maps to PBBI web-mapping in the Cloud

### MAPBASIC

- Support for creating new Tile Server Table
- Support for saving toolbar docking location
- Support for multi-style and label override
- Support for configuring/enhancing right-click context menu for Table List and Layer Control
- Support for browsing table from Layer Control
- Support for enabling custom dialog docking

### SUPPORTED OPERATING SYSTEMS

#### Desktop Operating Systems:

- Windows® 7 Ultimate
- Windows® 7 Ultimate 64-bit with 32-bit compatibility mode
- Windows® Vista Ultimate SP1
- Windows® XP Professional SP3

#### Server Operating Systems

- Windows® 2008 Server
- Windows® 2008 Server with Citrix® XenApp 5.5 (the new name for Citrix® Presentation Server)
- Windows® 2008 Server R2 64-bit with Citrix® XenApp 6.0

# MapInfo Professional v11.0

## MAPINFO PROFESSIONAL v10.0 ADDED:

### EASE OF USE/USER INTERFACE

- New Menu and ToolBars
- New Layer Control for significantly improved ease of use and productivity
- Modeless layer control
- Interactive Style swatches
- Multiple layers operations
- Layers from different maps can be manipulated
- Layer Control offers Pause/Resume option
- Group Layers - Ability to add Group layers is available
- Tool-tips show file path +name + zoom range

### DATA ACCESS

- MS Office 2007 Support
- MS SQL Server 2008 spatial read/write
- PostGIS read/write

### ENHANCED ANALYSIS/NEW TOOLS

- Calculate and append proportion overlap. Use examples:
- **Retail:** Ability to quickly and easily calculate total population or other demographics of a driving region around a store location
- **Telco:** Ability to quickly and easily calculate any demographic value based on a coverage signal

### UNITED STATES

One Global View  
Troy, NY 12180

1.800.327.8627

pbbi.sales@pb.com  
www.pbinsight.com

### CANADA

26 Wellington Street East  
Suite 500  
Toronto, ON M5E 1S2

1.800.268.3282

pbbi.canada.sales@pb.com  
www.pbinsight.ca

### EUROPE/UNITED KINGDOM

Minton Place  
Victoria Street  
Windsor, Berkshire SL4 1EG

+44.800.840.0001

pbbi.europe@pb.com  
www.pbinsight.co.uk

### ASIA PACIFIC/AUSTRALIA

Level 7, 1 Elizabeth Plaza  
North Sydney NSW 2060

+61.2.9437.6255

pbbi.australia@pb.com  
pbbi.singapore@pb.com  
pbbi.china@pb.com  
www.pbinsight.com.au

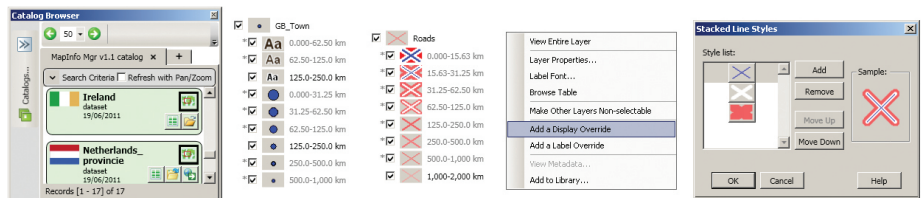
### INDIA

Pitney Bowes Software India Pvt.  
Ltd.

C-28-29, 5th Floor, Tower-B,  
Logix Cyber Park, Sector 62,  
Noida, UP 201307, India

+91-120-402-6000

contactindia@pb.com  
www.pbinsight.co.in



From left to right:

The Catalogue Browser (for finding your data) added in v10.5 and improved in v11.0

Examples of the improved handling of map styles added in v10.5

The 'right click' menu in Layer Control showing easy access to the new map styling options

The 'Stacked Styles' capability brings vastly increased options and possibilities for map styles.

Visit our web page to download a free trial version of  
MapInfo Professional v11.0 <http://pbinsight.co.uk/Pro11>